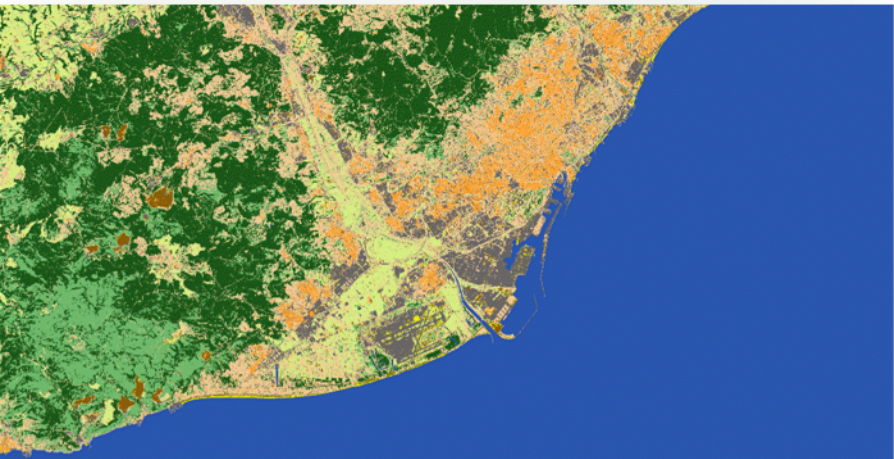




Waterline Quality Control

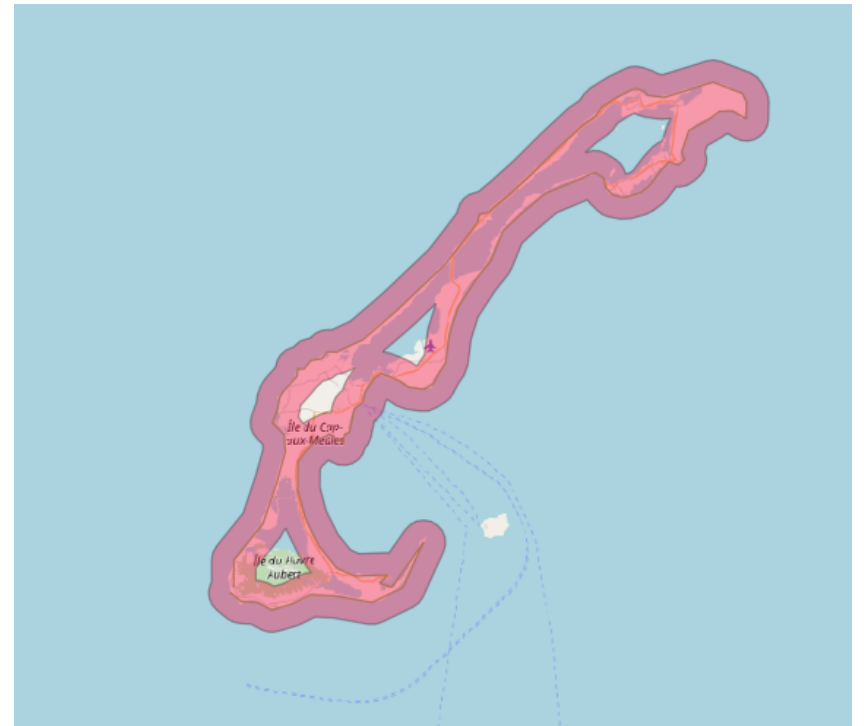


Internal Quality Control



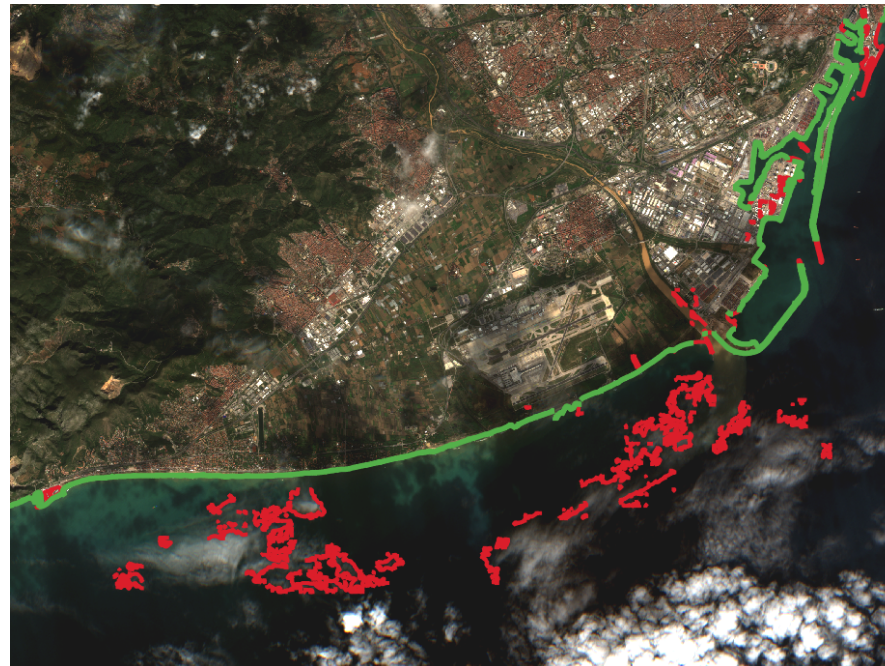
Waterline: Internal Quality Control.

- Buffer region flagging.
 - Remove any waterline outside a buffer zone around coastline.
- Short line flagging.
 - 75 x 75 pixel kernel size.
 - Flag any line shorter than 75 pixel length.



Waterline: Internal Quality Control.

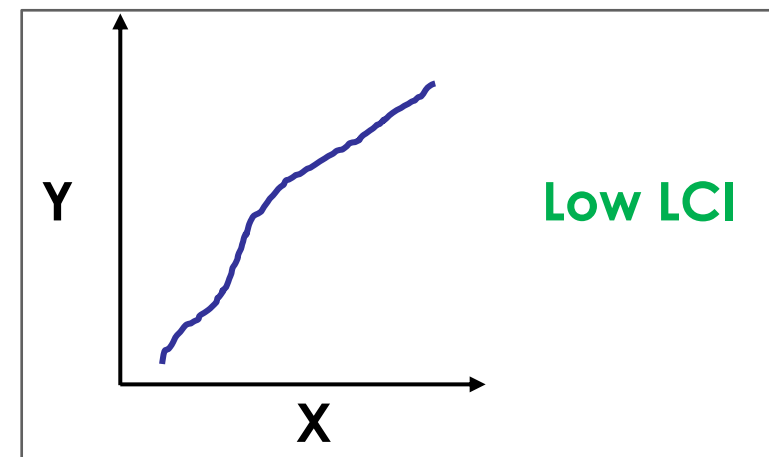
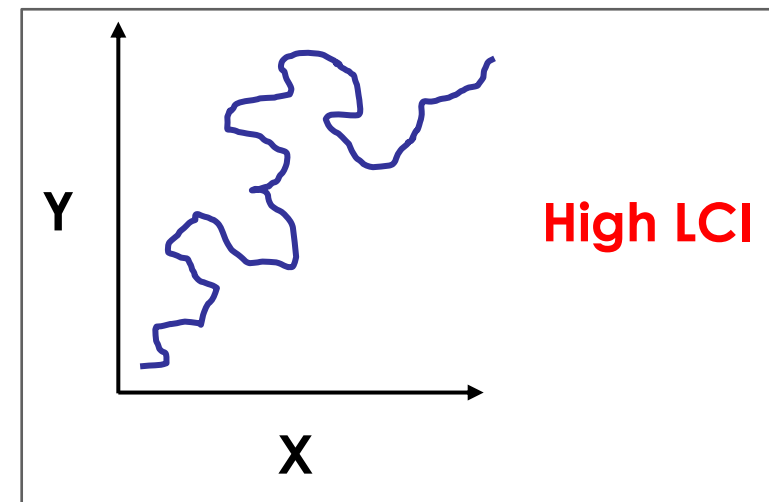
- Pathfinding methodology.
 - Exploits small breaks in waterline.
 - Finds the shortest path from start to end points of the waterline.
 - Flags any line segment not on the path.



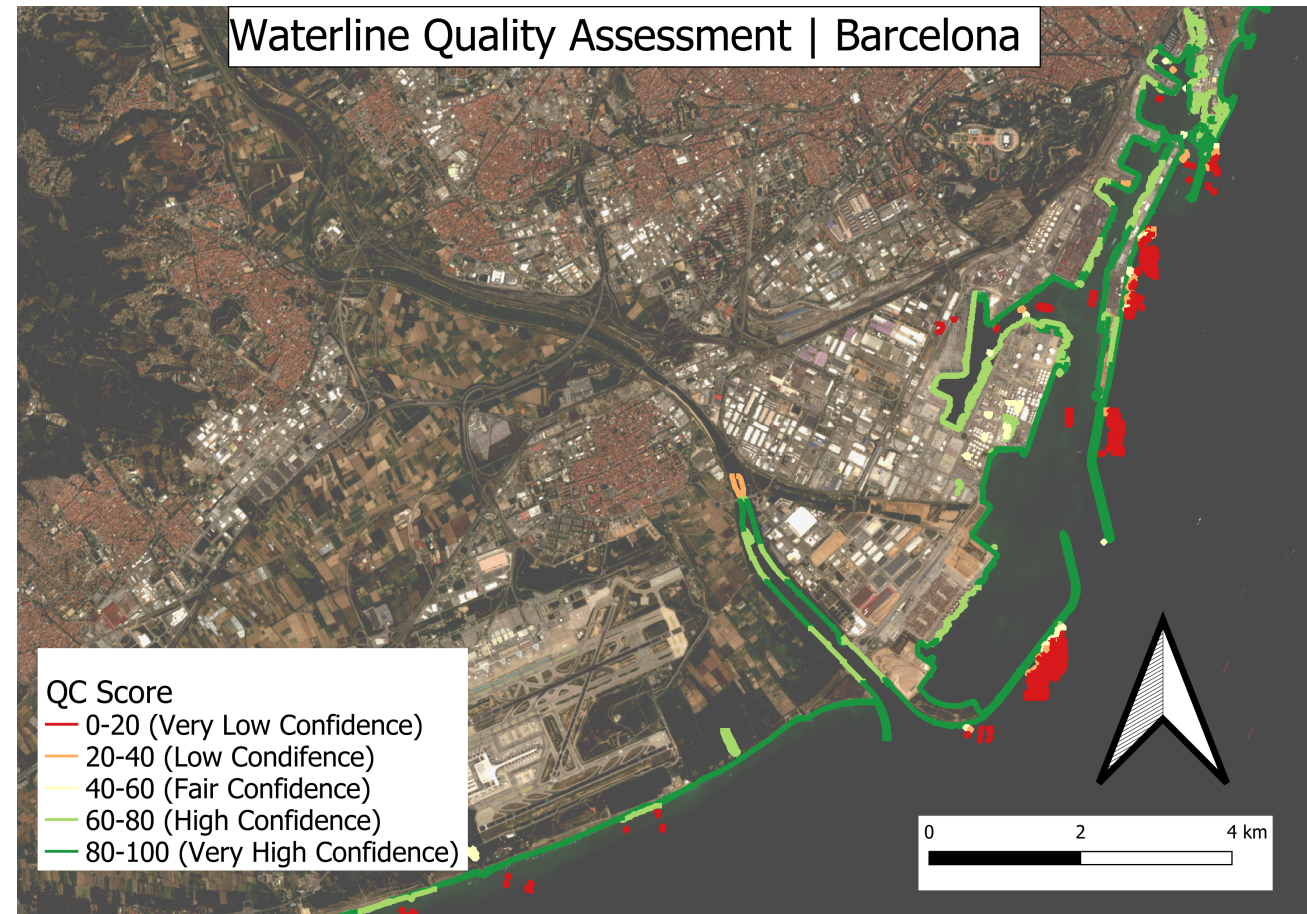
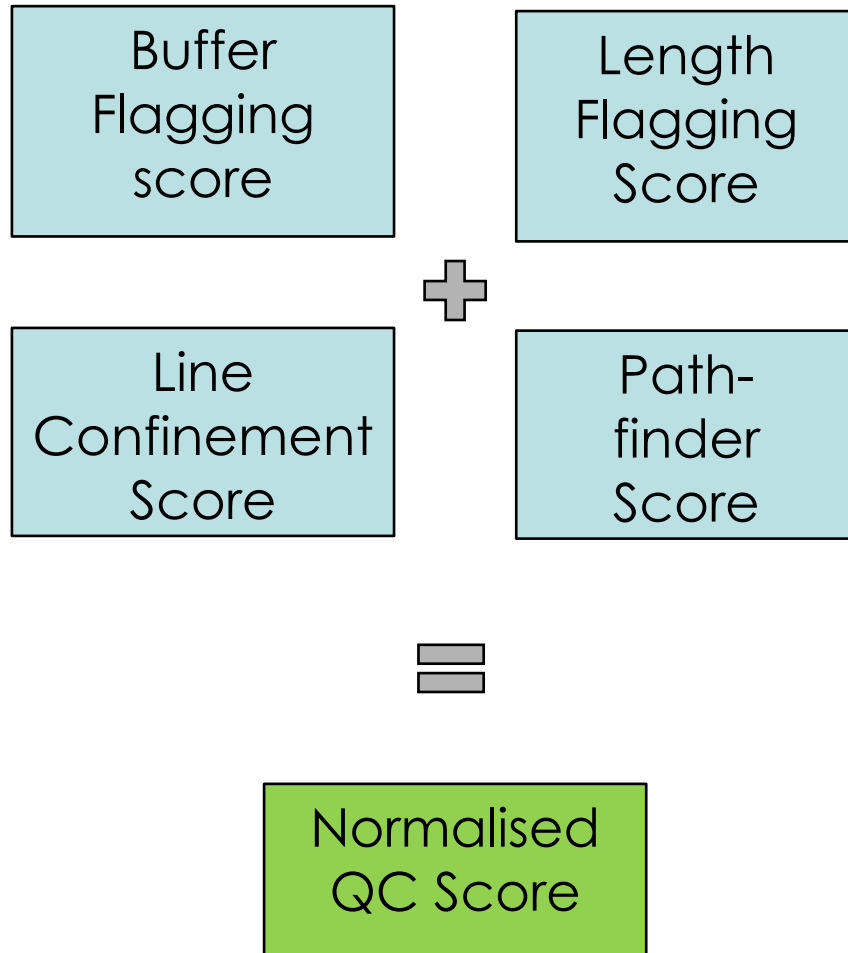
Waterline: Internal Quality Control.

- Line Geometry flagging.
 - Line Confinement Index (LCI):

$$\frac{\text{Line Length}}{|\Delta X| + |\Delta Y|}$$
 - Measure of 'Squiggleness'



Waterline: Internal Quality Control.

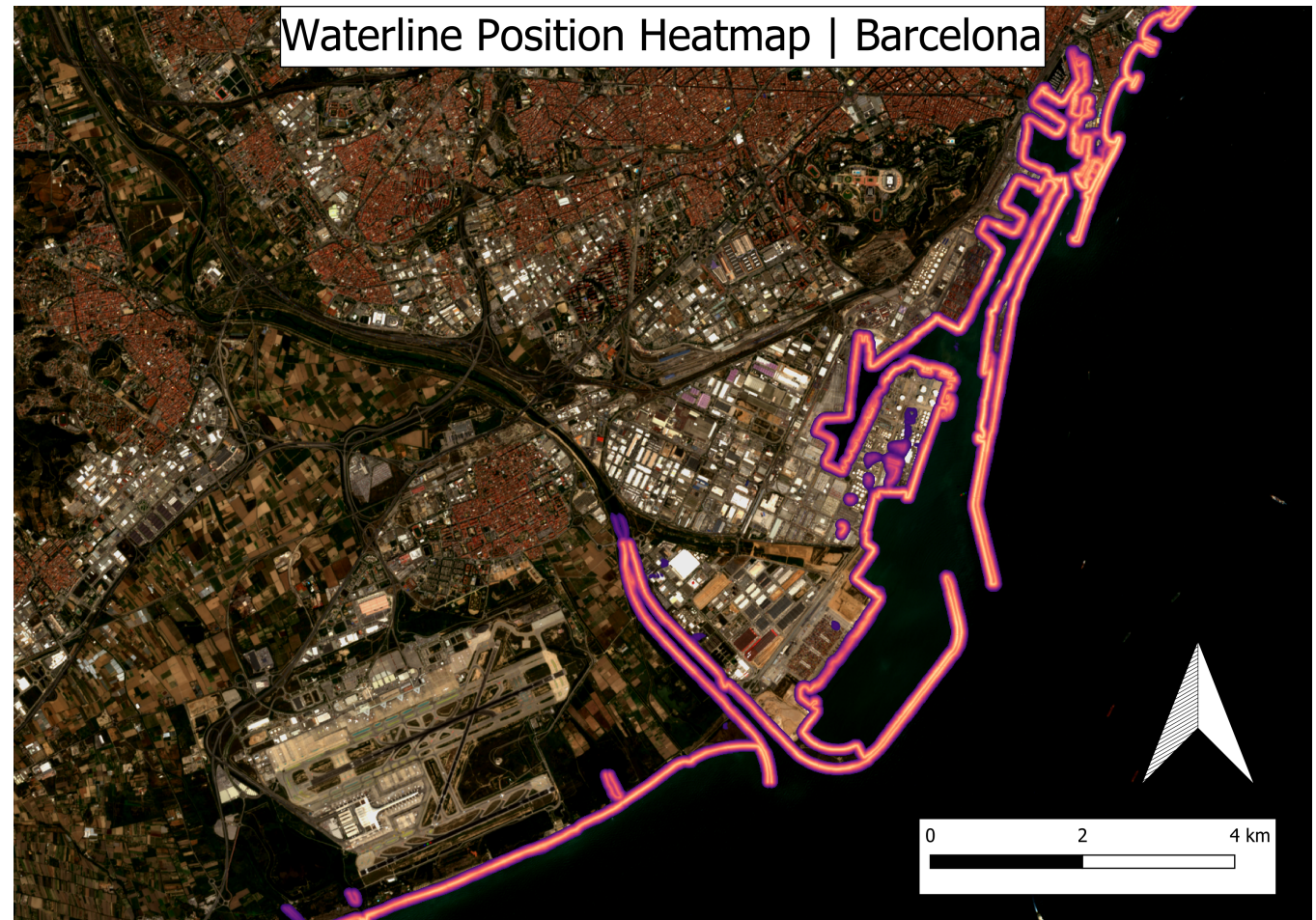


External Quality Control



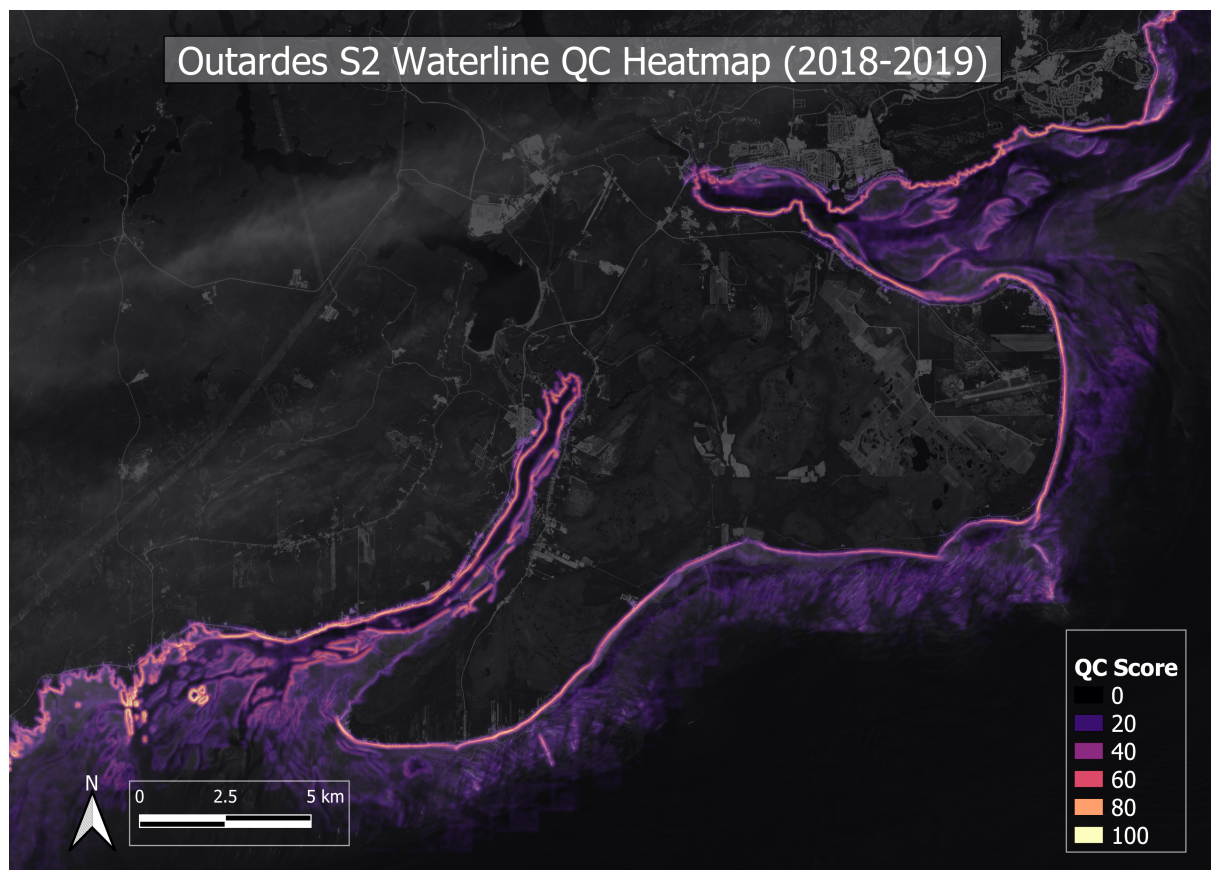
Waterline: External Quality Control

- Waterline Heatmap
 - Also applicable for Shorelines.
 - Based on overlapping waterline positions.
 - Each segment given a QC score separate to internal QC score.

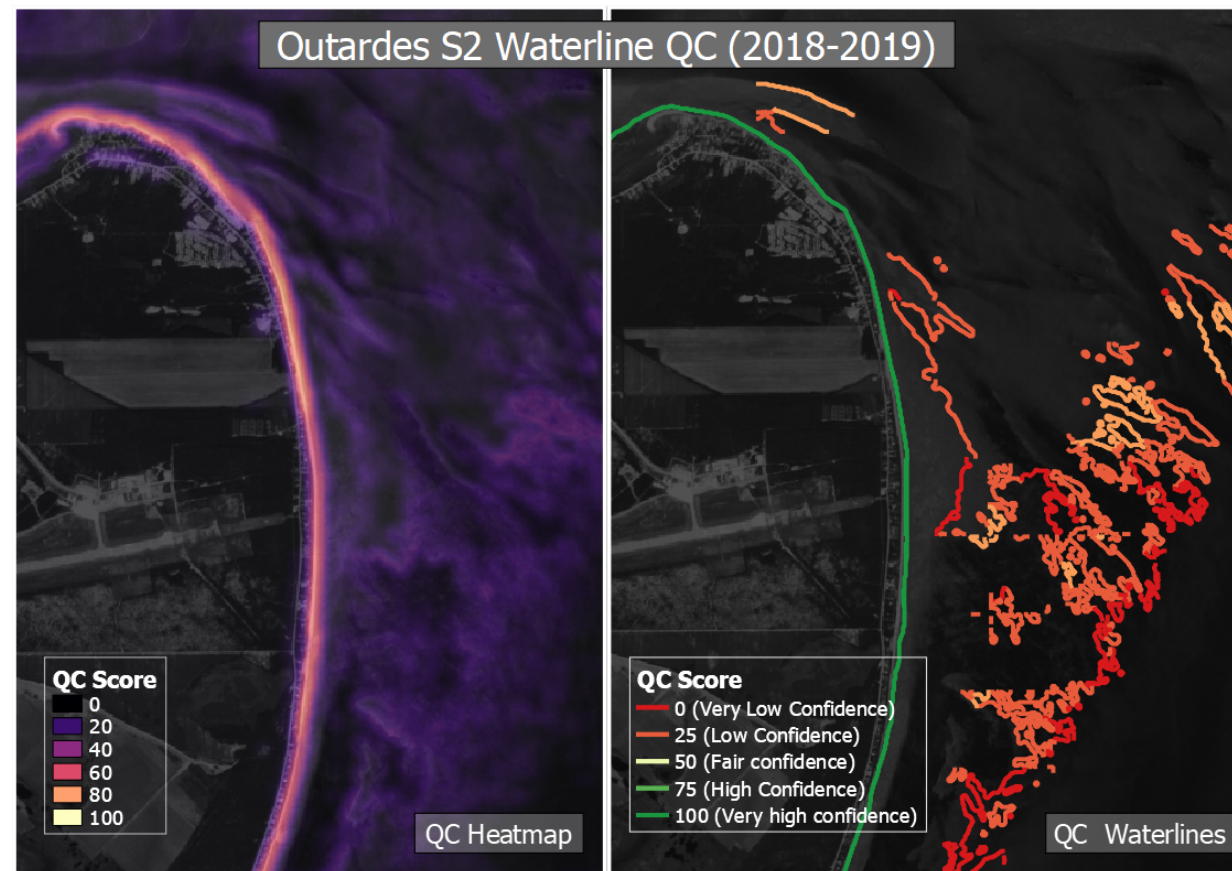


Waterline: External Quality Control

Outardes S2 Waterline QC Heatmap (2018-2019)

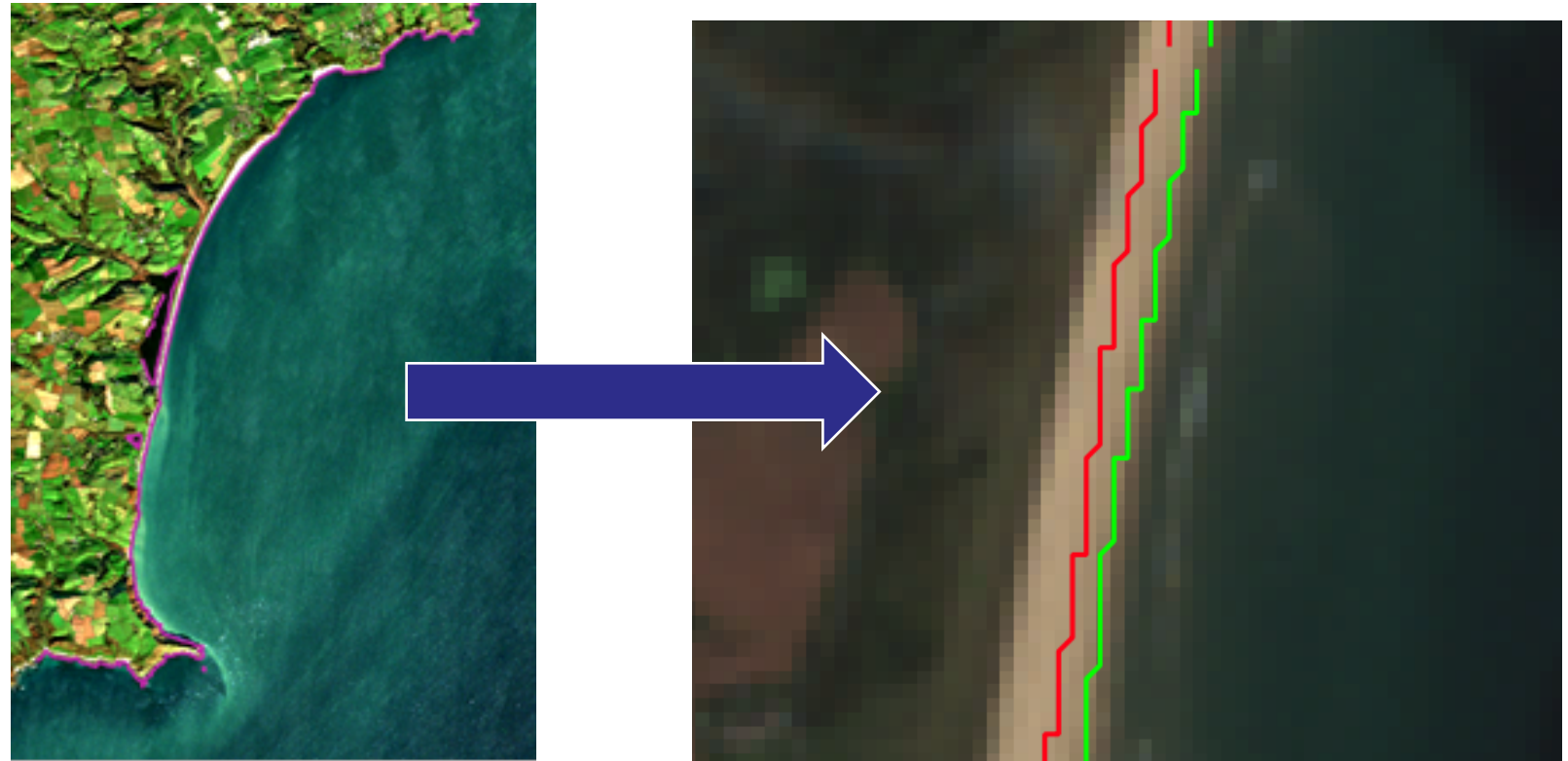


Outardes S2 Waterline QC (2018-2019)



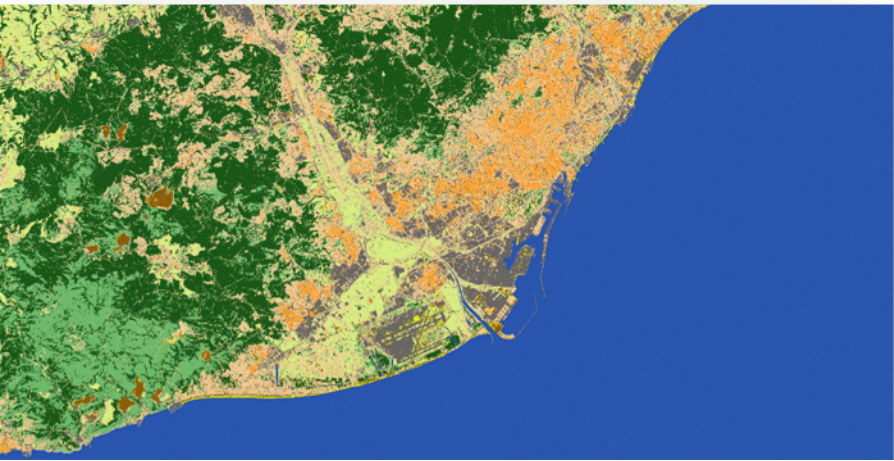
Waterline: External Quality Control

- By-eye analysis
 - Ensure product conforms with real world expectations.





Shoreline Quality Control



Internal Quality Control



Shoreline: Internal Quality Control

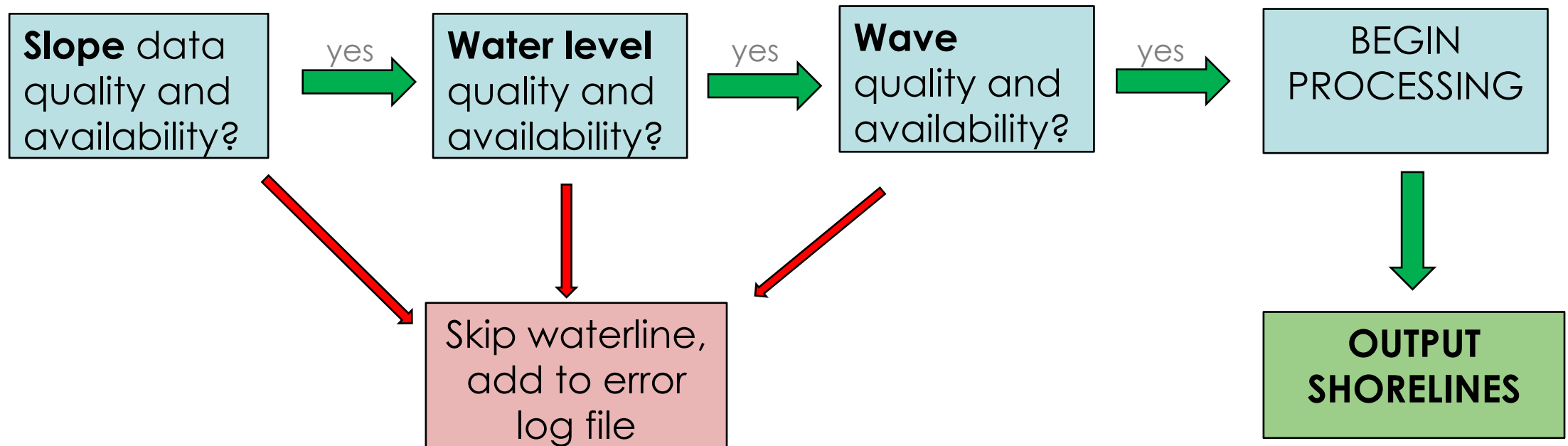
- Auxiliary Data Qualitative Assessments
 - Each piece of data rated from 1-3 against subjective criteria.
 - Includes spatial/temporal ranges, data type, measurement location, etc.

Shoreline: Internal Quality Control

Rating	Score	Comments
GOOD	10 – 12	Good confidence in applicability of the dataset. Good data range and continuity.
FAIR	7 - 9	Fair confidence in dataset applicability, some problems may occur due to limited data range. And or notable uncertainties may develop from these datasets.
POOR	4 - 7	Low confidence in applicability of the dataset. Processing throttled by limited data range. And or large uncertainties created which cannot be ignored.

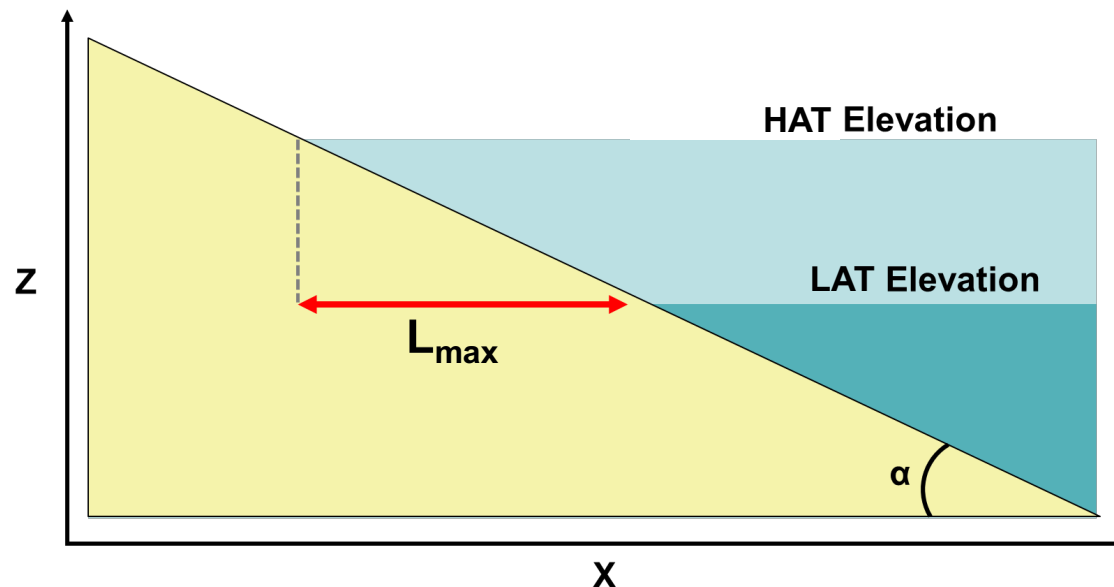
Location					
	Data Type	Location	Spatial/Temporal Range	Temporal Resolution	Final Rating
Slope	1	2	3	1	7
Wave Data	2	3	2	1	8
Water Level	2	3	2	1	8

Shoreline: Internal Quality Control



Shoreline: Internal Quality Control

- Maximum Waterline-to-Shoreline separation distance.
 - Any shoreline segments distanced above this value are flagged.



$$L_{max} = \frac{HAT - LAT}{\alpha}$$

External Quality Control



Shoreline: External Quality Control

- Comparison to known shoreline products.
 - Nautical charts.
 - Area Surveys.
 - GIS products.

